

East October 2010



Borough Update

Your Maidstone Borough Council Newsletter



MY council what matters to ME

See page 2



Free bulky rubbish service

Most weekends Maidstone council refuse lorries collect bulky household rubbish from locations in your area. Take your refuse to the Weekend Freighter Service at the times shown:

Saturday, October 9

07.45 – 08.30 Frinsted church
08.40 – 09.20 Wormshill. The Street
09.30 – 10.10 Harrietsham Primary School
10.20 – 11.00 Harrietsham. Church Lane
12.00 – 12.40 Lenham. Douglas Rd
12.50 – 13.30 Lenham. Ham Lane/Cherry Orchard
13.40 – 14.20 Lenham. Honeywood Road
14.30 – 15.10 Platts Heath. Green Lane
15.15 – 15.45 Grafty Green. Church Lane

Saturday, October 16

07.45 – 08.30 Hollingbourne. Troys Mead
08.45 – 09.15 Lenham. Warren Street
09.25 – 09.55 Ulcombe. Lodge Gardens

Saturday, October 23

07.45 – 08.30 Otham
08.45 – 09.45 Bearsted Village Green

Saturday, October 30

07.45 – 08.15 Walderslade. Impton Lane/
Spenlow Drive
08.25 – 09.00 Walderslade. Impton Lane/
Olivine Road

Saturday, November 6

12.00 – 12.55 Vinters Park. Marston Drive
13.05 – 14.05 Vinters Park. Hampton Road

Saturday, November 20

12.15 – 13.00 Grove Green. Grovewood Drive South
13.10 – 14.00 Grove Green. Grovewood Drive North
14.10 – 15.10 Madginford. Merton Road
15.10 – 15.45 Bearsted. Ashford Road/
Rosemary Road

We cannot collect electrical items such as fridges, televisions and vacuum cleaners or hazardous items. You can dispose of electrical appliances through our paid for bulky collection service. You can take hazardous and bulky items to the household waste recycling centre at Burial Ground Lane, Tovil, Maidstone. It is open Monday to Saturday, 8am to 4.30pm, and Sunday and Bank Holidays, 9am to 4pm. For more information about our bulky rubbish services, including paid for doorstep collections, visit maidstone.gov.uk or call the cleansing hotline on 01622 602162.

Borough Update

This is your council newsletter, produced up to six times a year in the Downs Mail newspaper. It is written, edited and designed by the council's communications team, Maidstone House, King Street, Maidstone, Kent ME15 6JQ. Email: pr@maidstone.gov.uk. Your comments and



Cabinet member for corporate services, Marion Ring

Maidstone council has been meeting people at shopping centres, super-markets and other events in Maidstone

MY council, what matters to ME

Borough throughout September and October to find out the services which matter most to them. Hundreds of people have been asked for their views on the massive savings that the council will have to make on its £23 million budget for services such as refuse collection, recycling and planning. The council has to save £6 million over the next three years.

The consultation includes details of the cabinet's initial thoughts and the council's statutory and non statutory services. Residents have commented on the proposals, suggested ideas for savings and said which services matter most to them.

The consultation is on the council's website – www.maidstone.gov.uk.

The final decision on next year's budget will be made in March 2011.

Christmas Lights Switch-on

Maidstone town centre, 5pm Sunday, November 21.

New websites promote Maidstone

Maidstone has a two new websites – to promote business, www.locateinmaidstone.co.uk and to promote tourism – www.visitmaidstone.com.

suggestions are always welcome. It is typeset by AW Design and printed by Uckfield Press.

If you are visually impaired and would like the newsletter text in large print, please call us on 01622 602807, and we will be happy to send you a copy.

Think fire safety

Kent Fire and Rescue Service is urging people to use environmentally friendly alternatives to bonfires to get rid of garden waste this autumn. It says bonfires of fallen leaves, clippings and old plants frequently burn out of control and pollute the environment. The service wants people to consider composting because it is environmentally friendly and safer. It can be done at home in a garden compost bin or by taking garden waste to the household waste recycling centre at Tovil. Alternatively, you can have garden waste collected from the kerbside by Maidstone Borough Council. For more information visit www.maidstone.gov.uk

Battle of Britain

Expert, Tony Webb, will talk about the skies over Maidstone and the aircraft that flew during the Battle of Britain. Maidstone Museum Time Talk, 7.30pm, Thursday, October 14. £3 for over 16s.

Hazlitt Choir

The Hazlitt choir meets every Wednesday, from 7pm–9pm, in the Exchange Studio at the Hazlitt Arts Centre (Rose Yard entrance). Membership costs £20 for 10 weeks. For more information visit hazlittartscentre.co.uk or call 01622 758611.

Silence

Maidstone Mayor Eric Hotson and councillors held a minutes silence in honour of Sapper Mark Smith of 36 Engineer Regiment and Sapper Ishwor Gurung of 69 Gurkha Field Squadron who died while serving in Afghanistan.

Music in the Museum

One of Britain's finest chamber ensembles will be at Maidstone Museum on Monday December 13. Primavera Chamber Ensemble will play Tchaikovsky Quartettsatz in B flat Op.2 no.3 12', Mozart String Quartet No. 19 in C Major K465 Dissonance 31', Rachmaninov Romance 6' and Beethoven String Quartet No.1 in F Op.18 no.1. £20, includes glass of wine or soft drink.

Holiday fun at Maidstone Museum

October

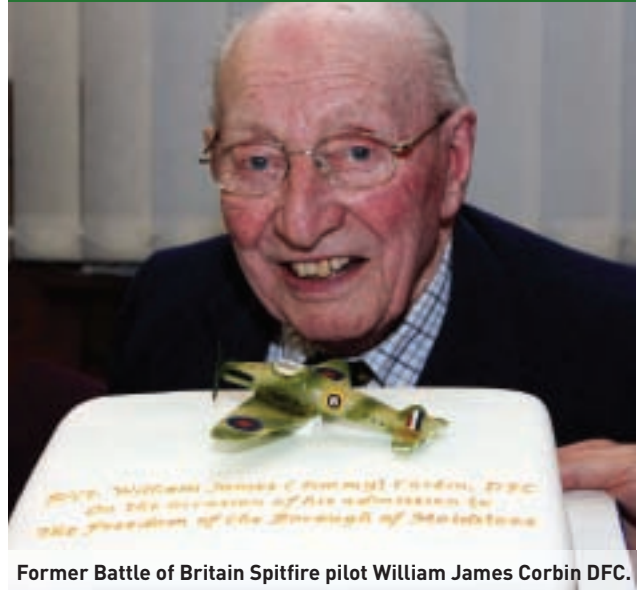
Mon 25 Dinosaur Footprints
Tues 26 Egyptian Pharaoh Collars
Wed 27 Dinosaur Big Draw Collage (FREE)
Thurs 28 Pop up Egyptian Mummy Cards
Fri 29 Flapping Dinosaur Mobile

December

Mon 20 Victorian Pomanders
Tues 21 Rudolph the Reindeer Glove Puppets
Wed 22 Victorian Calendars

Drop in anytime 10.30am to 12.30pm or 1.30 to 3.30pm. For under 12s, £2 per child.

Freeman of the Borough



Former Battle of Britain Spitfire pilot William James Corbin DFC.

Jimmy Corbin was admitted to be a Freeman in recognition of the eminent service rendered by him to the borough and the debt of gratitude owed to all those men of the Royal Air Force who flew in the Battle of Britain, represented by him. Mr Corbin was born in Maidstone and still lives in Bearsted.

Weekly food waste recycling

Maidstone residents will be getting a new weekly food waste collection as part of a new more environmentally friendly refuse and recycling service starting in February 2011. Food waste will be collected every week, along with either a recycling collection or the waste collection.

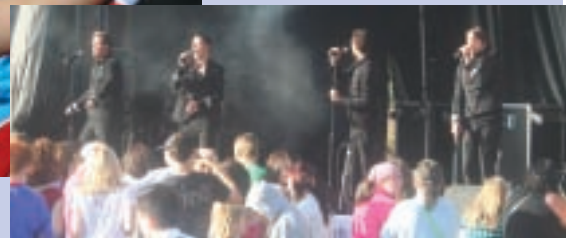
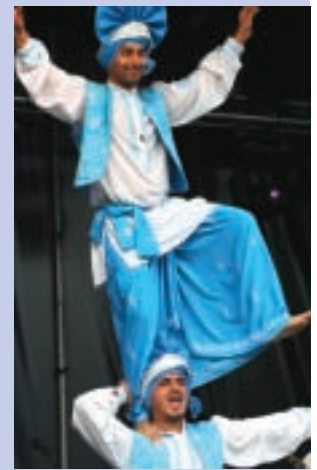
All of the food waste will be composted. Up to 40% of waste in bins is food so the new service is expected to increase the borough's recycling rate from 30% to 45-50%. That's great news for the environment and great news for residents who don't want to store food waste for more than a week.

Cabinet Member for the Environment, Ben Sherreard, said: "We know that many waste bins are only half full every week and it doesn't make sense collecting half empty bins. But we also know that residents want a weekly collection of food waste. So this is the best of both worlds. By collecting recycling one week and waste the next, along with food waste every week, we can increase recycling rates and become more efficient. And residents won't have to worry about storing rotting food waste." The new service is environmentally friendly because it separates food waste from the waste stream, increasing the number of items recycled in the borough.

"That will put the council in an excellent position to save money when the council goes out to tender for the next recycling and waste collection contract," said Cllr Sherreard. The council estimates that the saving could be more than £100,000 a year.

4 Maidstone Borough Council

Thousands descended on Mote Park for this year's Maidstone Mela. Cabinet Member for Community Services, Cllr John A. Wilson, said: "The weather was good but it was the quality of the entertainment that really shone out. I thank all those who organised the event and the volunteers who gave up their time." Highlights included Jazzy B and the Briefcase Blues Brothers, a fireworks display, a community parade and food, music and dance from around the world.



Hazlitt Arts Centre

Comedy nights Exchange Studio - £10

Mark Maier and Seann Walsh Wednesday, October 6 - 8pm

Mark Maier's extraordinary talent for accents and dialects makes this evening a real hit.

Doc Brown and Josh Widdicombe

Wednesday, November 3 - 8pm

Doc Brown- as featured in the BBC Radio 4 show, 'Do You Know What You Are Saying?'

Legally Blonde The Musical Theatre Trip

Wednesday, October 6. Coach Leaves At 5pm. £57

All singing, all dancing, feel good musical comedy will be the highlight of your year!

Book your place through the box office 01622 758611 or visit our website www.hazlittartscentre.co.uk

Bon Jovi Experience Friday, October 15 - 7.30pm £15 Concs £13.50

Wipe away those Autumn blues, this tribute band will have you rocking in the aisles.

Sherlock Holmes ... The Last Act! Saturday, October 23 - 8pm £12 Concs £10

Fine wit, humour and high drama.

Hazlitt Youth Theatre present Thirteen Tuesday, October 26 to Saturday, October 30 - 7.45pm £6-12 (Tues Oct 26 - Pay What You Can Preview)

The Crucible - Saturday, November 6 - 7.30pm £12 Concs £10

This season's Hazlitt drama production promises to be a real cracker -featuring a large cast and innovative staging.

Dreamboats And Petticoats Theatre Trip Thursday, November 18. Coach Leaves At 12.30pm. £49

Pure nostalgia, featuring songs from Roy Orbison, The Shadows, Eddie Cochran, Billy Fury, Chuck Berry and many more.



Panto- Beauty and The Beast December 4 - January 9

Featuring Melissa Suffield (Lucy Beale from EastEnders) and Ben Freeman (Scott Windsor in Emmerdale). Tickets start from £6.95.



Maidstone Music

For musical events - from opera to rock gigs and everything in between - visit www.maidstonemusic.co.uk

What's On! To find out what's on in Maidstone Borough visit www.tour-maidstone.com

Subscribe to us on  - www.youtube.com/user/maidstonecouncil

Maidstone Borough Council Annual Report 2009–10

Make it Maidstone... Make it Prosperous

We made significant progress in reducing costs and improving services by working with neighbouring councils – Ashford, Sevenoaks, Swale, Tunbridge Wells and Kent County Council. We progressed our three flagship regeneration schemes to improve Mote Park, Maidstone Museum East Wing extension and Maidstone High Street. We have improved our doorstep recycling service so that people can conveniently recycle paper, card, tins, cans and plastics. We have invested almost £3million to provide grants for 226 affordable homes.

The Audit Commission the government's spending and performance watchdog has rated us in the top 18 performing councils in the country. This is an excellent result but we will still try to do better.

We can achieve more by working together with others. The Maidstone Local Strategic Partnership brings together a range of organizations including the Police, the Primary Care Trust, the voluntary sector and local businesses. In this way we are tackling waste reduction, health, education,

employment, climate change and crime much more effectively than if we work alone.

The next few years are likely to be increasingly difficult as we try to manage with fewer resources. However, we are confident that by achieving greater value for money, working in partnership with others and by taking the lead in the community, we will be able to deliver the services that local residents need. Our top priorities until 2015 are:

- Attracting, helping and developing local business so that we can increase the number of good quality jobs in the borough;
- Increasing recycling levels to 50%;
- Making sure that the right homes are available at the right price in the right area;
- Improving outcomes in priority areas such as Park Wood, the High Street and in Shepway;
- Ensuring that all our services are of a high quality.



**You said
you wanted
more
recycling...**

We have rolled out a new kerbside collection service across the borough. We were recycling 27% of rubbish, now we are recycling 30% and it's increasing.



Achievements

Economy and Prosperity

- Helped boost the local economy by working with partners to assist 36 independent businesses with subsidised advertising;
- Launched the High Street Regeneration Project and consulted the public on the scheme;
- Signed a memorandum of understanding with Business Support Kent to work more closely with businesses;
- Used, 'Growing Concern', a not-for-profit organisation for people with learning disabilities, to tidy up the heritage area around the Archbishops Palace; and
- Launched the Community Toilet Scheme, closing three poorly used council toilets and opening 16 toilets in retail premises to the public.

Sustainable and Integrated Transport

- Provided Park & Sail at Christmas to reduce traffic and congestion in the town and provide an excellent service for shoppers;
- Listened to you and reintroduced the Park & Ride bus link between London Road and Sittingbourne Road;
- Rejected the plans for a Kent International Gateway at junction 7 of the M20 and led the fight against the appeal;
- Lobbied Network Rail, supported better rail links to Maidstone and responded to Kent County Council's 20 year integrated transport strategy; and
- Held 'Fit for the Road' to raise awareness of road accidents. Worked with partners to give safety advice to 1,273 schoolchildren at our Safety in Action event 2009.

Crime, Confidence and Safety

- Helped reduce crime by 9.5% (there were 9,447 crimes recorded in 2009-10 compared to 10,438 in 2008-9) and made 237 anti-social behaviour interventions;
- Ran Operation Cubit, targeting graffiti and abandoned cars – removing 30 illegal vehicles;
- Worked with the Police on 'Operation Safer Summer'

to provide a reassuring Police presence in our parks;

- Installed CCTV in our Park & Ride car parks and introduced regular warden patrols;

- Set up a new multi-agency Community Safety Unit with Kent Police to improve our response to anti-social behaviour; and
- Delivered a Community Safety booklet to 40,000 households.

Health and Older People

- Supported the Urban Blue Bus which travels around the borough promoting healthy living including, stopping smoking and weight management;
- Provided health advice in the town centre and Shepway including a Wellpoint machine in the Gateway;
- Assessed the health issues within the Air Quality Management Area which encompasses the urban area, the M20 and major roads; and
- Opposed the NHS decision to remove maternity delivery services from Maidstone Hospital.

Children, Young People and Families

- Funded 66 places on the Hotfoot play scheme and with Kent County Council provided 110 places to vulnerable children on our play schemes;
- Worked with partners to deliver the Maidstone Skills studio – to help 14-16 year olds gain vocational skills in an out of school setting;
- Worked to help long-term unemployed young people into apprenticeships and work experience programmes; and
- Invested £153,000 in improving play facilities at Giddyhorn Lane, Maidstone and worked with partners to open a new play area at Bellshaw, Park Wood.

Homes and Communities

- Ensured that developers provided 403 new affordable homes – the highest number in any district local authority in Kent;
- Prevented 533 families from becoming homeless;
- Brought 83 empty homes back into use;
- Awarded grants to 109 people to help them continue to live in their own homes;
- Teamed up with Heatseekers to undertake thermographic surveys of all homes in the borough by 2012 and assisted local people to improve energy efficiency in their homes;
- Created a partnership that has secured almost £1m of new funding for 18 affordable homes in Broomfield and Kingswood;
- Empowered local people in Park Wood to have a greater say in improving their neighbourhood over the next five years; and
- Opened the Social Housing Fraud line to target illegal sub-letting of social housing – we were one of the first authorities in Kent to do this.



You said you wanted more affordable housing...

In the last three years we have secured more than £43m and invested a further £11m of your own money to provide more than 900 new affordable homes.

Sport, Creativity and Culture

- Launched a £4.5m refurbishment of Maidstone Leisure Centre to create one of the best centres in the South East;
- Celebrated the Hazlitt Arts Centre's first birthday with the unveiling of a plaque to commemorate local artist Tony Hart and launched the StARTLe Art Prize;
- Expanded Maidstone Mela to become a two day event celebrating music, dance and food in Mote Park that attracted around 12,000 visitors;
- Thanked 108 volunteers during National Volunteers Week for their 3,915 unpaid hours working for Sports Development and Maidstone Museum;
- Launched Maidstone's Dream to create a sporting legacy and support young people to compete in the 2012 Olympics; and
- Completed a purpose built athletics facility and running track with our partners at Sutton Valence.



you said

we did

You said you wanted better leisure facilities...

We are investing more than £4m to rejuvenate Maidstone Leisure Centre with new and improved gym and swimming facilities.

Environmental Excellence and Climate Change

- Increased recycling rates to 30% and reduced general rubbish by 12% per household. Launched the Love Food, Hate Waste campaign asking people to stop wasting food and money;
- Restored Brenchley Gardens to its Victorian glory by making it more open and spacious, and providing an excellent Summer Band Season in the bandstand;
- Launched a campaign on littering and introduced our Gum Campaign with a fine of £75 per offence;

- Satisfaction with street cleansing increased from 60 to 64%;
- Retained the prestigious Green Flag for Clare Park, Maidstone – making it one of the best open spaces in the country;
- Installed two new incinerators in Vinters Park Crematorium that comply with the new environmental standard for mercury emissions;
- Supported Town Centre Management by providing ideas and information to the public on greener living initiatives such as coming to town without your car; and
- Worked with a local building company to build a new, environmentally friendly depot complete with solar hot water panels and intelligent lighting as well as rain water harvesting and recycling.



you said

we did

You said you were concerned about flytipping...

Maidstone Borough Council and Kent Police work together to track down offenders who can be issued with up to a £50,000 fine or even imprisonment.

YOUR VIEWS... We want to know whether you've found our annual report informative and what information you'd like to see in next year's report.

Please send your comments and ideas to: The Communications Team, Maidstone Borough Council, Maidstone House, King Street, Maidstone ME15 6JQ email: pr@maidstone.gov.uk

Financial Report

Balance Sheet at 31 March 2010

What the Council owns and is owed	£000
Property, Vehicles & Equipment	85,639
Investments	8,681
Money owed to the Council	13,710
Money owed by the Council	(84,284)
	23,746

Financed by:

Distributable Reserves (Cash)	10,344
Non-Distributable Reserves (Non-cash)	13,402
	23,746

Distributable Reserves made up of:	
Capital Receipts from the sale of assets	1,955
Revenue Balances	8,389
	10,344

Non-Distributable Reserves are non-cash reserves that the Council is required to maintain by law. These relate mainly to the revaluation of fixed assets and the expenditure on them. Revenue balances represent sums set-aside by the Council over the years from revenue activities, either as a contingency against future unexpected events, or for specific purposes. It is considered good financial management to maintain a healthy revenue balance.

The Cost of Council Services for the year ended 31 March 2010

	£000
Leader of the Council	(1,879)
Corporate Services	7,962
Community Services	1,440
Environment	9,662
Regeneration	7,642
Leisure & Culture	5,083

Net Cost of Services	29,910
Payments to Parishes	905
Investment Income	(742)
Capital Accounting & Pensions Adjustments	2,209

Amount to be met from Government Grants & Local Tax Payers

Council Tax	13,720
General Government Grants	1,895
Business Rates	7,689

Total	23,304
Net Deficit	(8,978)

Capital accounting and pensions adjustments represent non-cash adjustments that the Council are required to make to show the true net cost of its services. These are then reversed out so there is no impact upon the level of Council Tax.

Cash Flow

	£000
Cash In – Capital	6,113
Cash In – Revenue	125,458
Cash In – Investments Repaid	215,004
	346,575
Cash Out – Capital	(13,043)
Cash Out – Revenue	(127,904)
Cash Out – Investments Made	(204,755)
	(345,702)

Cash Resources at 31 March 2010

873

This statement represents the total value of cash transactions that the Council undertook during the course of the financial year.

Capital Expenditure 2009/10

	£000
Office Accommodation	399
CCTV	42
Grants to Parished Areas	13
Corporate Property	228
Vehicle & Equipment Purchases	179
Fremains CPO Payments	224
IT Projects	235
Corporate Projects	33
Park & Ride Sites CCTV	55
Car Park Improvements	22
Land Drainage	26
Recycling	793
Athletics Track	295
Playground Improvements	574
Crematorium Refurbishment	846
Leisure Centre	324
Museum Improvements	238
Parks & Open Spaces	191
Improvements to Leisure Facilities	57
Renovation Grants	1,893
New Depot Construction Works	2,917
Support for Social Housing	2,997
High Street Regeneration	344
Other Minor Regeneration Works	32

Total Capital Expenditure

Funded by:

Revenue Support	480
Use of Capital Receipts	6,704
Grants & Contributions	5,773
	12,957

These are sums the council has spent on acquisitions and enhancements to its fixed assets such as property, vehicles and equipment. It also includes grants made towards the building of new social housing units and the renovation of existing properties.

Please note that this financial statement is subject to audit, if you wish to view the full unaudited accounts they are available on the council website.

This report can be made available in other community languages and formats upon request such as large print, Braille or audio. Please call our Communications Team on 01622 602351. Minicom number 01622 602224
www.maidstone.gov.uk customer care@maidstone.gov.uk 01622 602000