

MAIDSTONE BOROUGH COUNCIL

RECORD OF DECISION OF THE HEAD OF PLANNING

Decision Made: 8 April 2013

Neighbourhood Plan Area Application

Issue for Decision

To consider Headcorn parish as a Neighbourhood Plan Area.

Decision Made

The neighbourhood area submitted by Headcorn Parish Council to Maidstone Borough Council on 3rd December 2012 is **approved**.

Reasons for Decision

Consultation

Consultation commenced on Monday 4th February 2013 and ended at 5pm on Tuesday 19th March 2013. The consultation was advertised as follows:

1. Note distributed to all households in the parish at start of consultation period
2. Neighbourhood Plan Area application (including a map) posted on Maidstone Borough Council's website and on Headcorn Parish Council's website
3. Poster advertising the consultation on notice boards in the parish
4. Ward members and adjoining ward members were made aware of the consultation via email

Representations Received During Consultation

Four representations were received in support of the application. No objections were received.

Considerations

1. Does the proposed plan area follow existing, established administrative or planning boundaries?
YES – the proposed plan area follows the existing parish boundary
2. Does it exclude areas which in planning terms it would be more appropriate to include (for example where planning designation or development location straddles a parish boundary)
NO
3. Does it overlap with another approved neighbourhood area (this is not permitted)
NO

Conclusion

Headcorn Parish Council will be preparing the neighbourhood plan and are considered a relevant body¹ under the Localism Act 2011.

The identification of Headcorn in Maidstone Borough Council's Core Strategy as a Rural Service Centre places specific emphasis on the growth of the village as a place to live and work. The village must therefore accommodate additional housing and the necessary associated infrastructure in the near future. Headcorn Parish Council is progressing with the preparation of a neighbourhood plan and believes a robust and well considered neighbourhood plan offers the best opportunity to accommodate growth in a successful way.

Headcorn has a well defined and established boundary as a parish, which includes the village centre, the hamlet of Hawkenbury, outlying farms and other properties. It is intended that the whole of the parish will be the designated area for the neighbourhood plan. Working to the same boundary for both the parish and the neighbourhood plan will avoid potential confusion for those that live, work and visit the parish.

No objections were received during consultation and the proposed plan area (see map below) meets the criteria set out above. The plan area is considered acceptable in planning terms and the parish council has followed due process in line with the Neighbourhood Planning (General) Regulations, Part 2, S. 5(1).

Alternatives considered and why rejected

The decision to approve the neighbourhood plan area has been made for the reasons stated above. The alternative is to reject the application but the council is satisfied that due process has been followed and no representations were made during the consultation to suggest the geographic area of the parish should not form the Neighbourhood Plan Area.

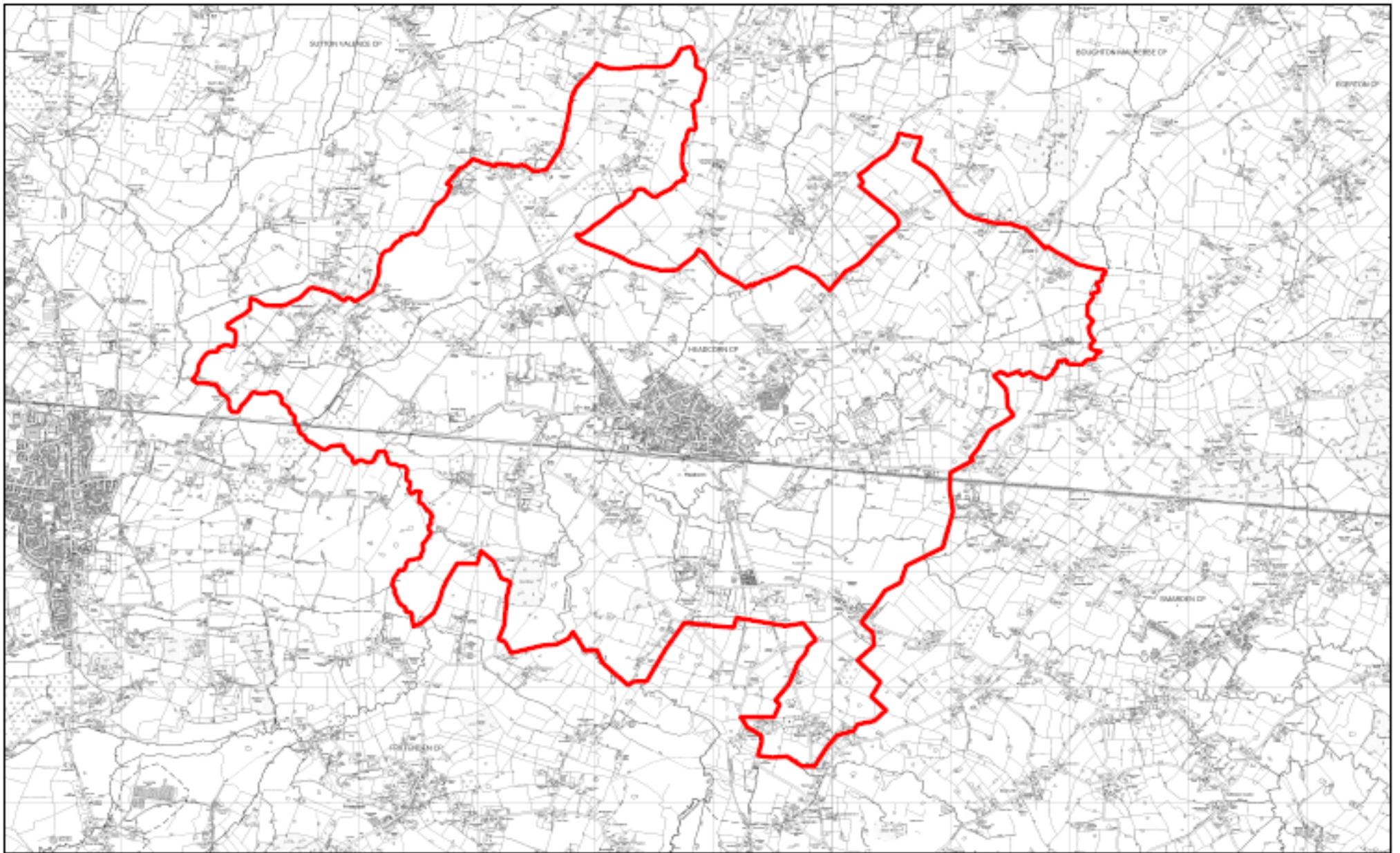
Background Papers

None



Signature: _____
Rob Jarman, Head of Planning

¹ For the definition of "relevant body" see section 61G (2) of the 1990 Act (inserted by paragraph 2 of Schedule 9 to the Localism Act 2011 (c.20).



HEADCORN PARISH



Reproduced from the Ordnance Survey mapping with the permission of the Controller of Her Majesty's Stationery Office. © Crown copyright.
Unauthorized reproduction infringes Crown copyright and may lead to prosecution or civil proceedings.
The Maidstone Borough Council License No. 100019636, 2011. NOT TO SCALE.